

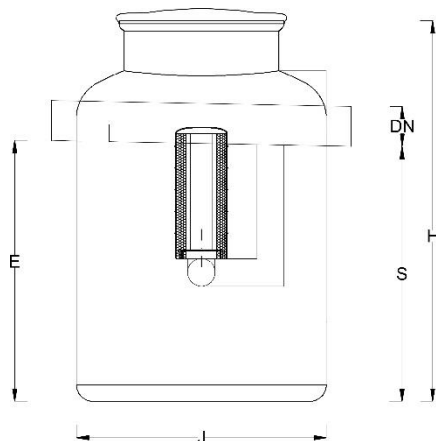
## Coalescence separator class I in compliance with PN EN 858, with integrated sedimentation basin and a by-pass

Model: **BIOSEP-OGB**

Material: **GRP**

### DESCRIPTION

- Device made of polyester reinforced with fiber glass from orthophthalic resins
- In compliance with PN EN 858
- No need to erect retaining walls
- Installation: Underground /overground (free-standing)
- Inspection lid reinforced with fiber glass, 100% tightness, locked with latches, optional cast-iron lid of the extension (ROADS AND PAVEMENTS), superstructure
- Shaft with the diameter of 620mm
- Ventillation DN 110 fitted according to the client's requirements



### OPERATING RULES

- Hydrocarbon separators of this type retain the petroleum products contained in the rainwater.
- COALESCENCE FILTER provides the reduction of petroleum products at the outlet 5 mg/liter in compliance with PN-EN 858-1.
- Automated sealing system prevents the petroleum products from flowing into run-off water, also in case of severe storms.



Model	Flow Qnom	Max. flow Qmax	Basin capacity	Diameter D	Inlet slot height E	Outlet slot height S	Total height H	Inlet slot diameter DN	Separator active capacity	Weight of the heaviest el. (approx)
	[l/s]	[l/s]	[l]	[mm]	[mm]	[mm]	[mm]	[mm]	[l]	[kg]
<b>BIOSEP-OGB 1,5/15/300</b>	1,5	15	300	1000	590	570	900	160	450	39
<b>BIOSEP-OGB 2/20/250</b>	2	20	250	1000	590	560	900	160	450	39
<b>BIOSEP-OGB 2/20/450</b>	2	20	450	1000	800	770	1150	200	600	45
<b>BIOSEP-OGB 3/30/350</b>	3	30	350	1000	800	790	1150	200	620	45
<b>BIOSEP-OGB 3/30/700</b>	3	30	700	1000	1250	1230	1520	200	970	62
<b>BIOSEP-OGB 6/60/900</b>	6	60	900	1000	1850	1800	2150	200	1420	78

## OPTIONAL EQUIPMENT

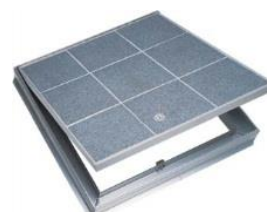
Dedicated extensions' height: 250mm; 500mm; 750mm with the option of connecting

Ascension pipe adapter

Overfill and level of pollutants alarm

Drain installation DN 65

Leakproof manhole type BKP, in case the separator is fitted under the floor



## OPERATION

The frequency of emptying the trap depends on the flow rate of influent wastewater.

The tank chamber must be regularly emptied at least 2 times a year or when signalled by the alarm device.

After the tank has been emptied, the trap must be re-filled with water.