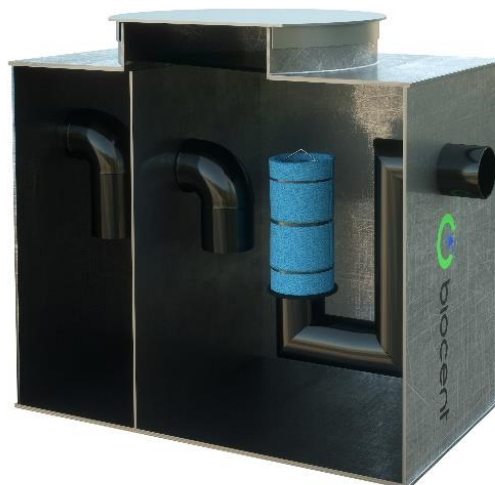
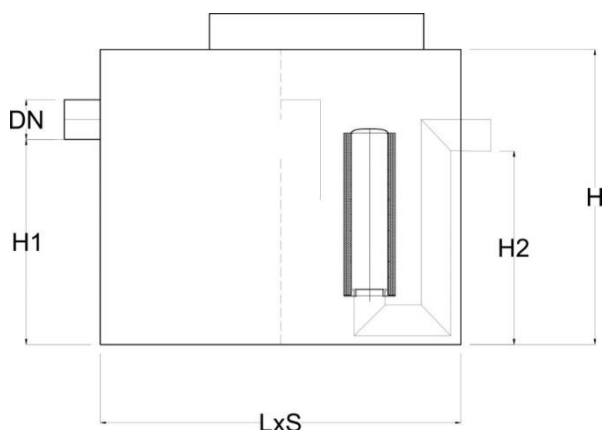


Model: **BIOSEP-OP**

Material: **PEHD**

OPIS

- Separators in compliance with PN-EN 858-1:2005 + PN-EN 858-2:2003
- Produced from high density polyethylene
- Coalescence filter and automatic closure
- Installation: underground or overground
- PEHD pressed lid.



Model	Flow Qnom	Basin capacity	Langth L	Width S	Total height H	Inlet slot height DN	Inlet slot height H1	Outlet slot height H2	Weight of the heaviest el. (approx)
	[l/s]	[l]	[mm]	[mm]	[mm]	[mm]	[mm]	[mm]	[kg]
BIOSEP-OP 1,5/150	1,5	150	920	780	820	160	590	570	51
BIOSEP-OP 1,5/300	1,5	300	1270	780	820	160	590	570	64
BIOSEP-OP 3/300	3	300	1420	780	820	160	590	570	68
BIOSEP-OP 3/600	3	600	1480	880	1020	160	790	770	85
BIOSEP-OP 6/600	6	600	1480	880	1200	160	970	950	94

Other dimensions and flows can be aquired if arranged beforehand. Please contact our office if you need technical documentation.

Bearing in mind the constant quality improvement of our products, Biocent reserves the right to alter the dimensions of the products as well as adapting them to the installation conditions.

OPTIONAL EQUIPMENT

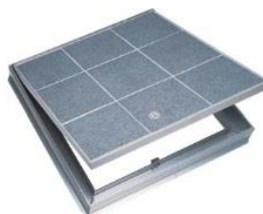
**Overfill and level of pollutants
alarm**



**Drain installation
DN 65**



**Leakproof manhole type BKP,
in case the separator is fitted
under the floor**



OPERATION

The frequency of emptying the trap depends on the flow rate of influent wastewater.

The tank chamber must be regularly emptied at least 2 times a year or when signalled by the alarm device.

After the tank has been emptied, the trap must be re-filled with water.