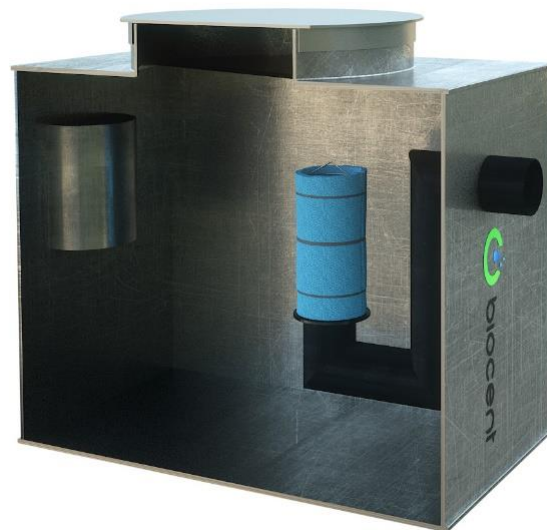
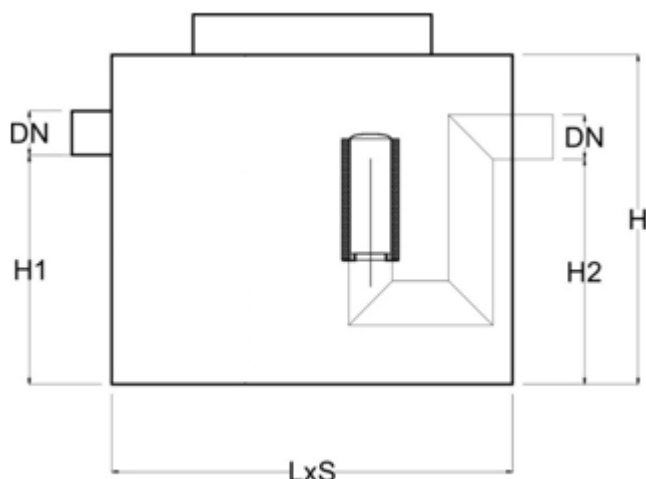


Model: **BIOSEP-P**

Material: **PEHD**

DESCRIPTION

- Separators in compliance with PN-EN 858-1:2005 + PN-EN 858-2:2003
- Made of high density polyethylene
- Coalescence filter and automatic closing
- Installation free-standing or underground
- Steel lids pressed



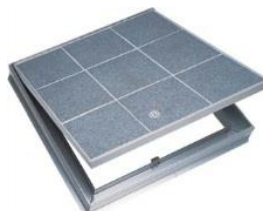
Model	Flow Q _{nom}	Total active capacity	Length L	Width S	Total height H	Inlet slot diameter DN	Inlet slot height H1	Outlet slot height H2	Weight of the heaviest el. (approx)
	[l/s]	[l]	[mm]	[mm]	[mm]	[mm]	[mm]	[mm]	[kg]
BIOSEP-P 4	4	350	920	780	820	160	590	570	48
BIOSEP-P 6	6	480	1270	780	820	160	590	570	58
BIOSEP-P 7	7	550	1420	780	820	160	590	570	62
BIOSEP-P 11	11	900	1480	880	1020	160	790	770	77
BIOSEP-P 13	13	1100	1480	880	1200	160	970	950	84

Other dimensions and flows can be acquired if arranged beforehand. Please contact our office if you need technical documentation.

Bearing in mind the constant quality improvement of our products, Biocent reserves the right to alter the dimensions of the products as well as adapting them to the installation conditions.

OPTIONAL EQUIPMENT

Overfill and level of pollutants alarm	Drain installation DN 65	Leakproof manhole type BKP, in case the separator is fitted under the floor
--	--------------------------	---



OPERATION

The frequency of emptying the trap depends on the flow rate of influent wastewater.

The tank chamber must be regularly emptied at least 2 times a year or when signalled by the alarm device.

After the tank has been emptied, the trap must be re-filled with water.